






BATCUBE[©]

MAKE SURE YOU ARE ABLE
TO START YOUR ENGINE

-  BatCube[©] is intended for use on vehicles for which stealth (thermal and acoustic signature) is essential.
-  It gives the crew all the information necessary on the energy capacity to accomplish the mission.
-  Furthermore, BatCube[©] is useful for maintenance because you now know when you should change each of your lead batteries.



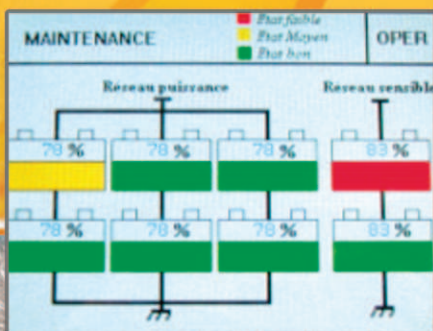
FEATURES



It identifies which battery is out of service

Indication of the remaining standby time when the engine is stopped

Displaying information (outputs I2C, CAN, RS 232...)



MEASURES



Measures battery health

Measures charge amount

Monitors from 2 to 8 batteries

